

# AzuRe193



**Descrição:** Painel de azulejos em azul e branco do período do Ciclo dos Mestres. Lisboa, 1690-1720, *São Francisco*, (MNAz, Inv. 10093Az). Dimensões: irregular  $\pm 137 \times 137 \times 16$  mm.

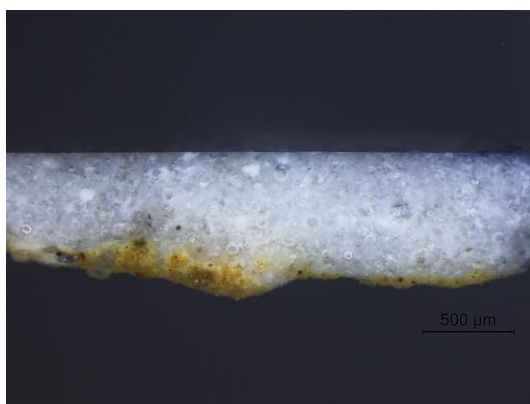
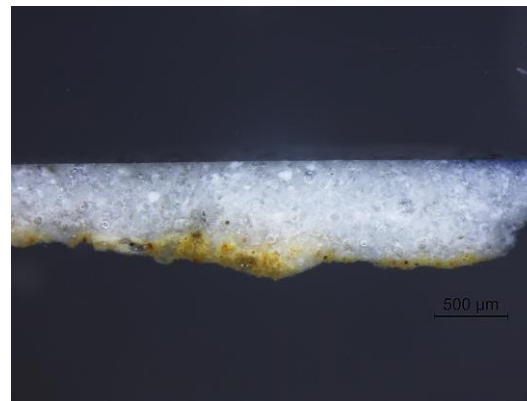
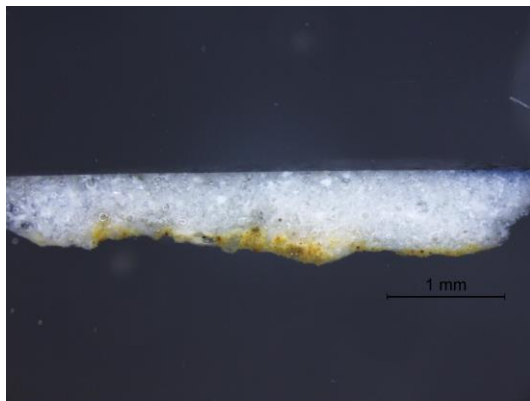
**Amostras:** Azulejos e secções polidas em depósito no *Museu Nacional do Azulejo* em Lisboa.

# Índice

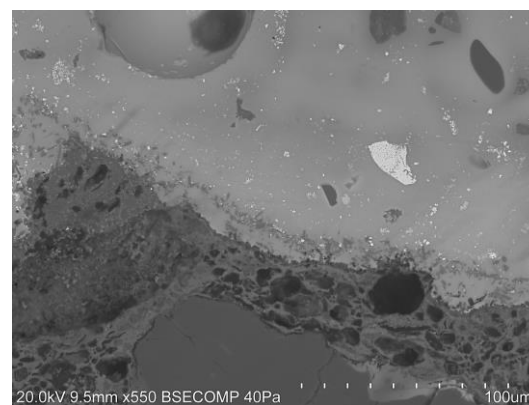
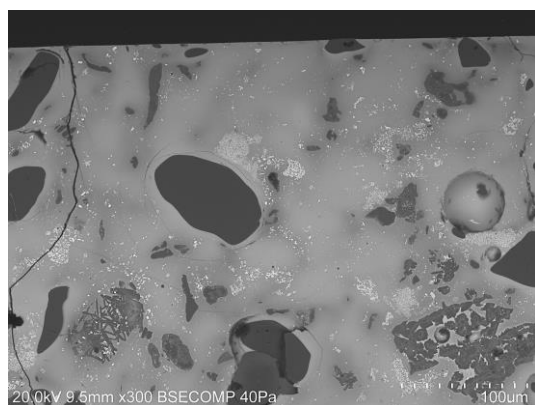
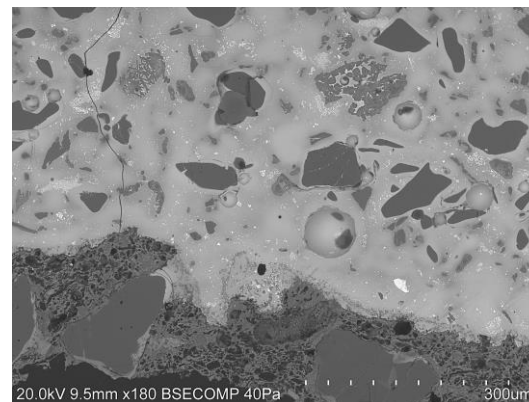
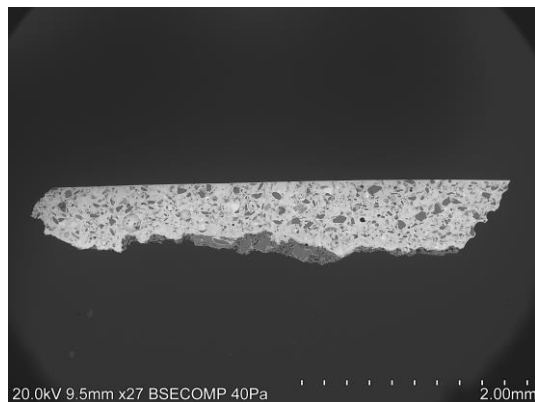
- **Caracterização Morfológica**
  - ✓ Imagens de microscopia ótica (OM)
  - ✓ Imagens de microscopia electrónica (SEM)
- **Caracterização Química/Mineralógica**
  - ✓ Análise por SEM/EDS

AzuRe193

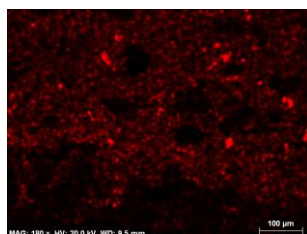
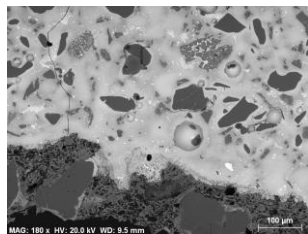




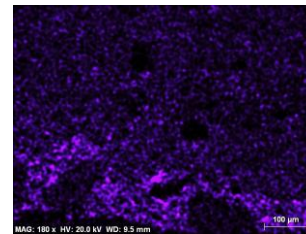
Equipamento: Lupa binocular Leica M205 C com câmara acoplada Leica DFC295.



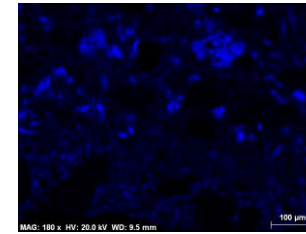
**Equipamento:** Microscópio eletrónico de varrimento HITACHI 3700N acoplado a um espectrómetro de energia dispersiva de raios-X Bruker Xflash 5010.



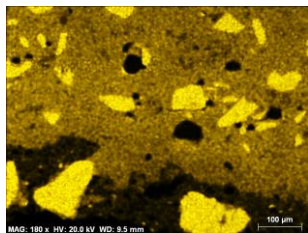
Na



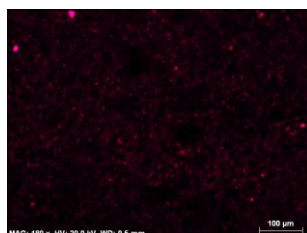
Mg



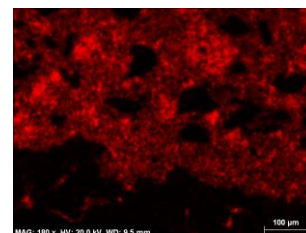
Al



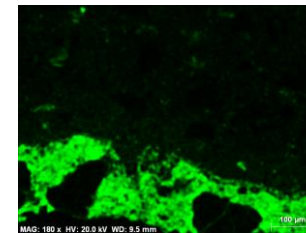
Si



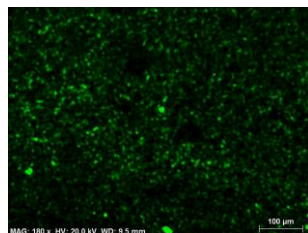
P



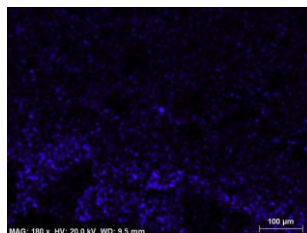
K



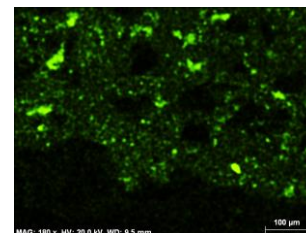
Ca



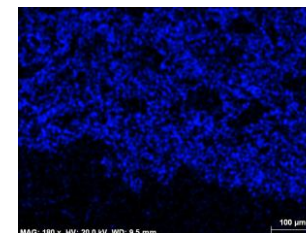
Ti



Fe



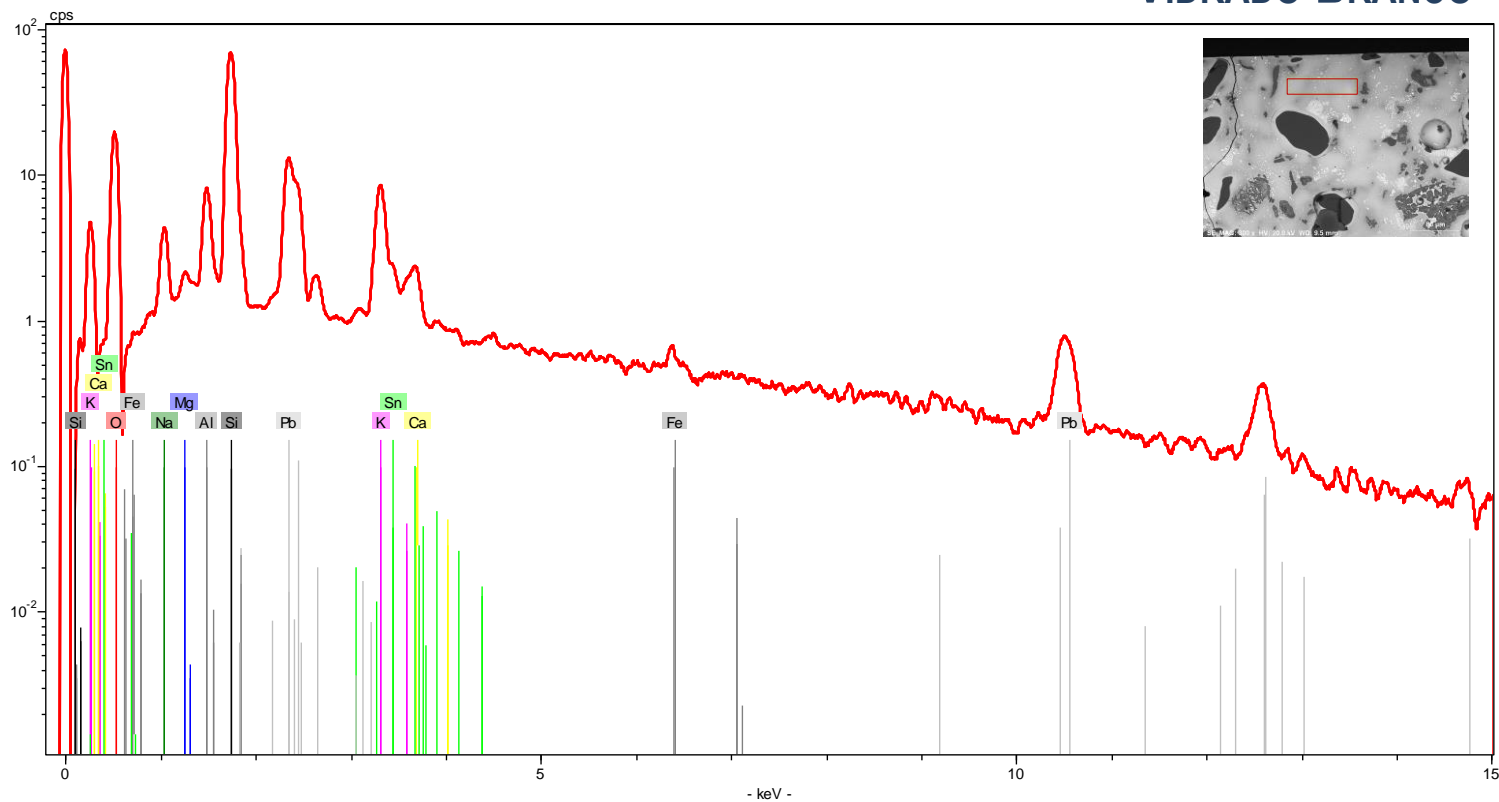
Sn



Pb

**Equipamento:** Microscópio eletrônico de varrimento HITACHI 3700N acoplado a um espectrómetro de energia dispersiva de raios-X Bruker Xflash 5010.

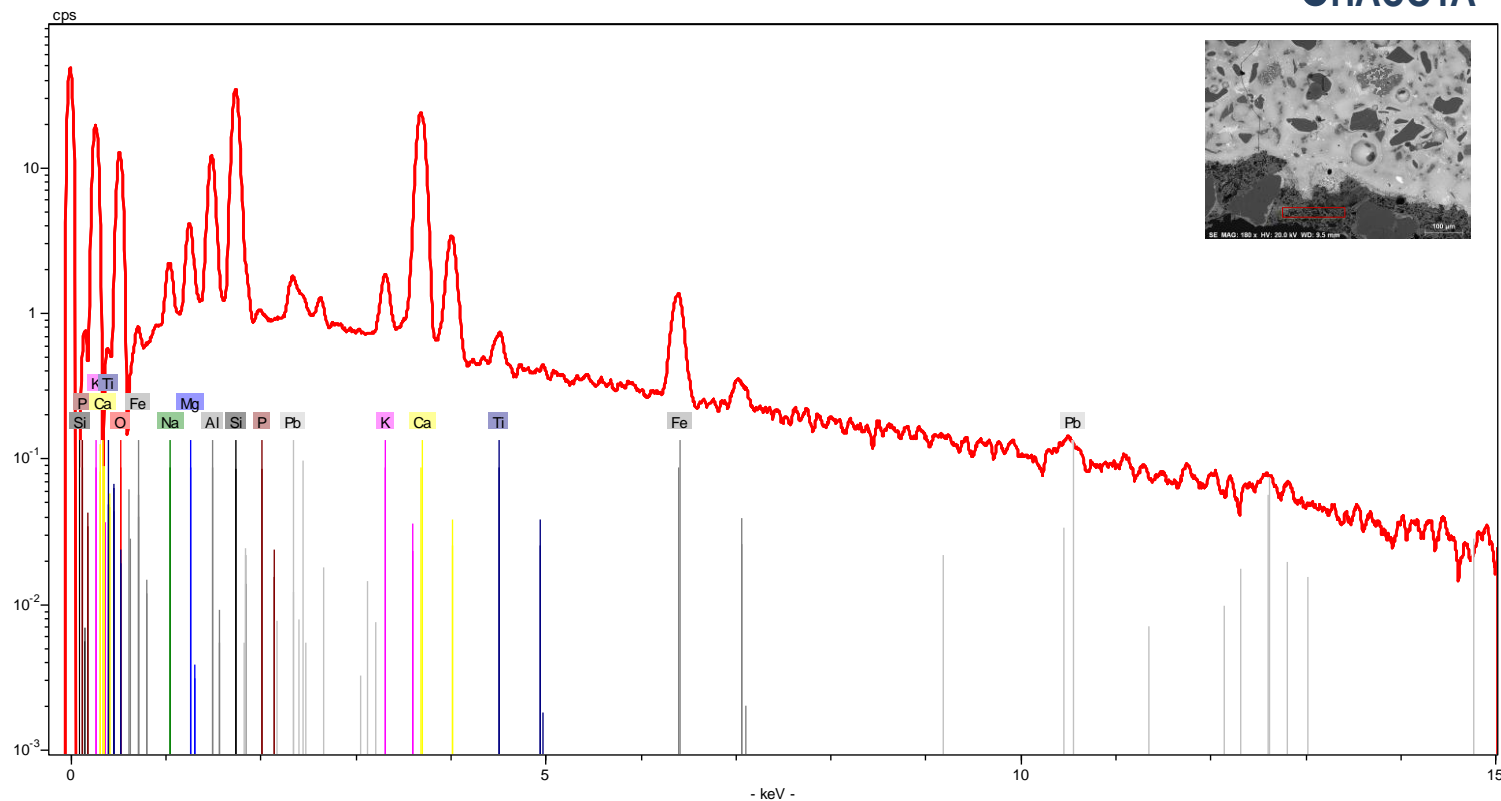
## VIDRADO BRANCO



[AzuRe193 EDS Vidrado.xls](#)

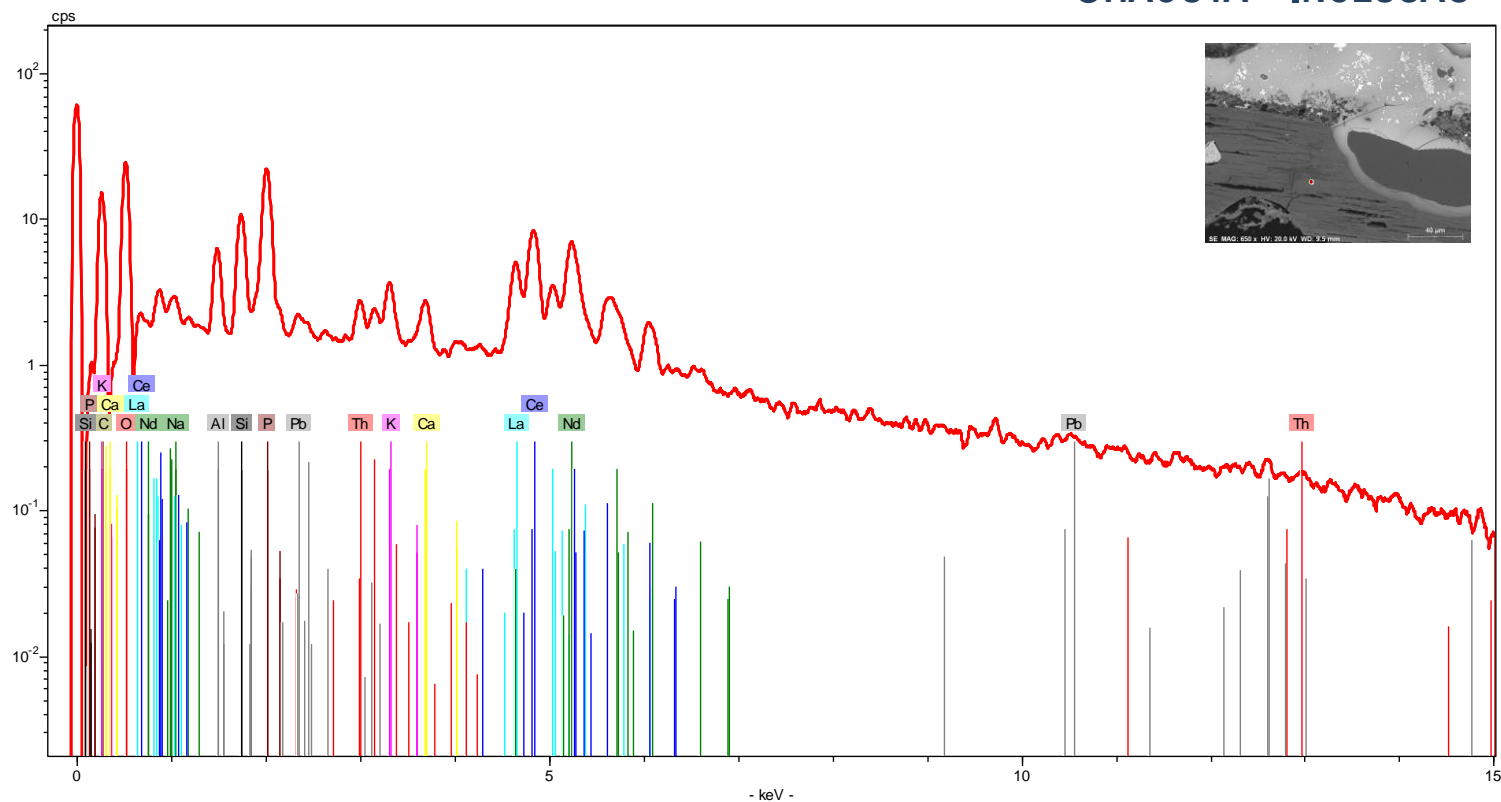
**Equipamento:** Microscópio eletrónico de varrimento HITACHI 3700N acoplado a um espectrómetro de energia dispersiva de raios-X Bruker Xflash 5010.

CHACOTA

[Azur193 EDS Chacota.xls](#)

**Equipamento:** Microscópio eletrónico de varrimento HITACHI 3700N acoplado a um espectrómetro de energia dispersiva de raios-X Bruker Xflash 5010.

## CHACOTA - INCLUSÃO

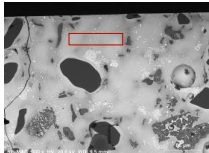
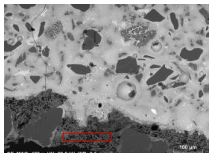


[Azur193 EDS Inclusão.xls](#)

**Equipamento:** Microscópio eletrônico de varrimento HITACHI 3700N acoplado a um espectrómetro de energia dispersiva de raios-X Bruker Xflash 5010.



## Composição química (% m/m)\*

Área Analisada	Na	Mg	Al	Si	P	K	Ca	Ti	Fe	Sn	Pb
 vidrado branco	4,29	0,85	4,83	37,47	--	9,26	0,92	--	1,42	5,28	35,68
 chacota - inclusão	2,86	3,78	10,12	23,89	0,18	1,91	38,54	1,07	5,08	--	12,58

\* - Os valores apresentados na tabela correspondem às percentagens mássicas dos elementos detetados na amostra, não considerando o teor de oxigénio e normalizados a 100% ([ver aviso](#)).

**Equipamento:** Microscópio eletrónico de varrimento HITACHI 3700N acoplado a um espectrómetro de energia dispersiva de raios-X Bruker Xflash 5010.